

Education: HPV Infections

Diane M. Harper, MD, MPH, MS

Professor

Dartmouth Medical School

Educational Audiences

- To Women who present for cervical cancer screening
 - Permission from them in order to perform a HPV-Pap screening test
- To Women who present with an ASCUS
 - Permission to order a high risk HPV triage test
- To Women who present to Colposcopy
- To Men who present with EGW
- To Men whose Partner has EGW or an abnormal Pap test
- To Couples, either singly or together

- To Middle/High School Health Classes
- To Media
- To General Public

Perspective, Purpose

A man is called a traitor, or a liberator.
A rich man is a thief or a philanthropist.
Is one a Crusader, or ruthless invader?
It is all in which label is able to persist.

There are precious few at ease
With moral ambiguities
So we act as though they don't exist.

What Story to Tell?

- Male factor in HPV transmission
- Male factor in Cervical Cancer development
- Sexual infection

With What Consequences?

Fear

Anxiety

Loathing

Depression

Distrust

Obsession

Uncleanliness

Diabolical Glee

**Another Approach
to Understanding
HPV as an Infection
that May Progress to Cancer**

Human Beings

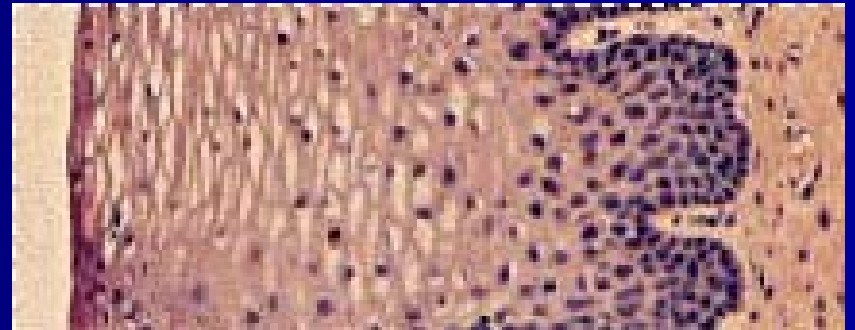
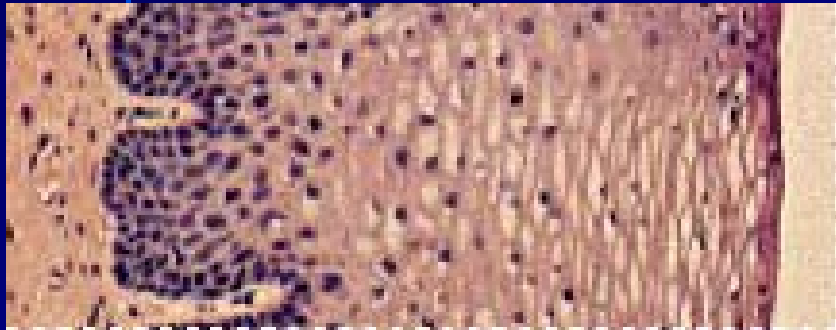
- Community dwellers
- Social beings; Bonding
- Touch is necessary for growth, development, health, and life
 - Skin to skin contact is a condition of life
 - Belief beyond our own being – touched by other generations
- Men and women are of equal importance
- Reproduction is necessary for the continuation of the human race

HPV is a

SKIN - TO - SKIN

CONTACT

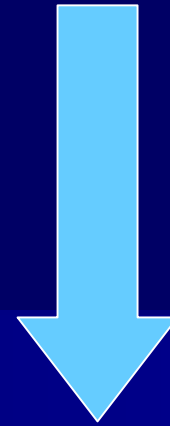
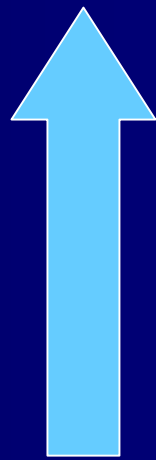
infection



RUBBING

CHAFING

ABRADING



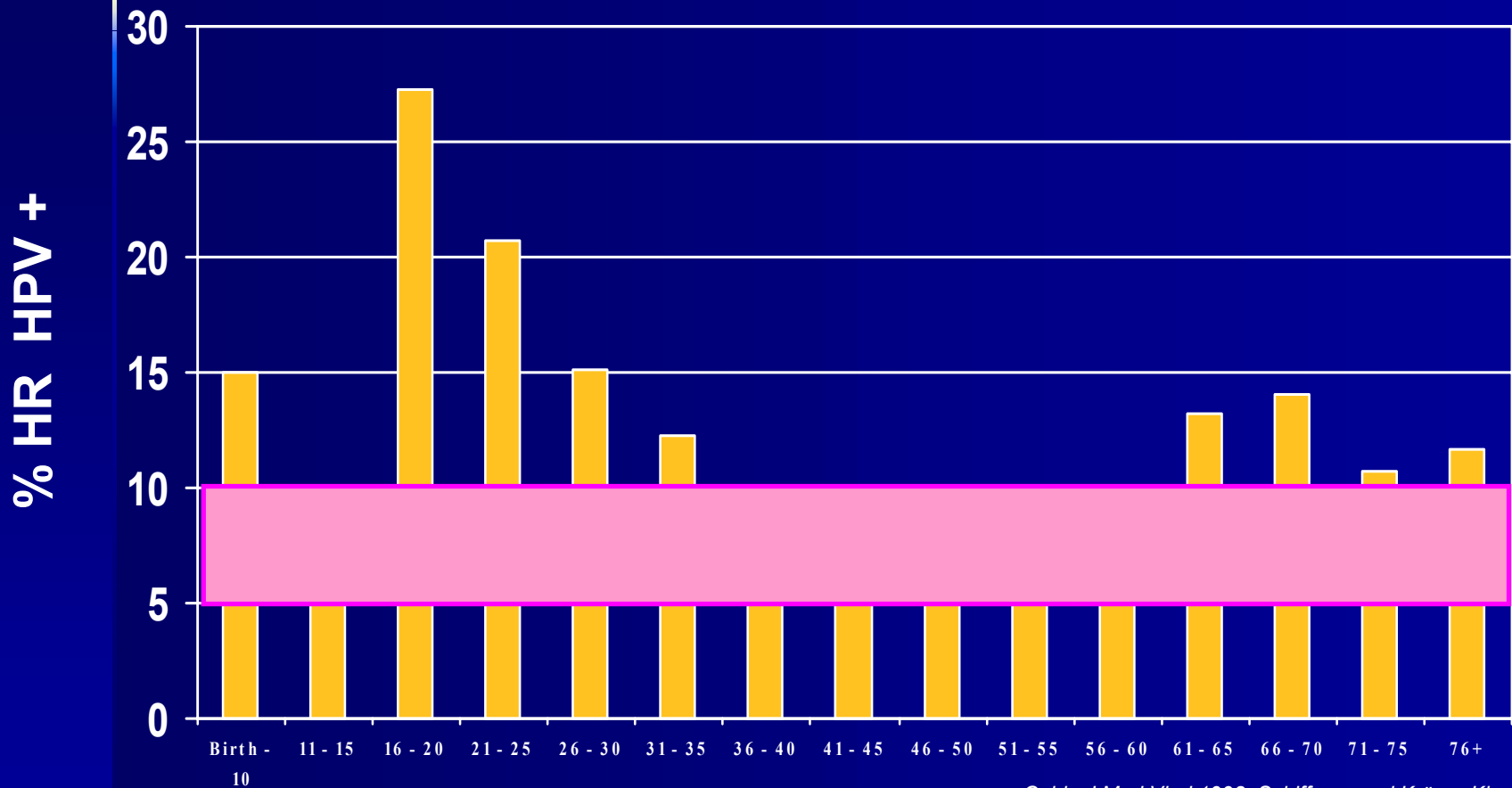
Cancers Attributable to Infection with Oncogenic HPV

SITE	TOTAL cancers	AF (%)	Attributable cancers	% all cancers
CERVIX	492,800	100	492,800	4.5%
ANUS	30,400	90	27,400	0.2%
VULVA,VAGINA	40,000	40	16,000	0.2%
PENIS	26,300	40	10,520	0.1%
OROPHARYNX	52,100	12	6,300	0.1%
MOUTH	274,100	3	8,200	0.1%
TOTAL			561,200	5.2%

HPV Infection – Between and Among Any and All Skin Surfaces

- Receptive and Donor skin surfaces:
 - Eyes, picking nose, blowing through sinuses
 - Hands – scratches, tears, fingernail hangers*
 - Hand washing has never become universal!
 - Mouth- biting tongue, cheeks, around teeth
 - Throat- scratchy, food, drink
 - Anus – hemorrhoids, cheek chafing
 - Vagina – tampons, speculum tears
 - Penis – clothing, work conditions
 - Vulva, Scrotum
- Parent/Child, Child/Child transmission?
 - Bathing, sleeping, changing diapers?
 - Developmental body exploration?

Prevalence Of Oncogenic Anogenital HPV Varies Throughout a Lifetime



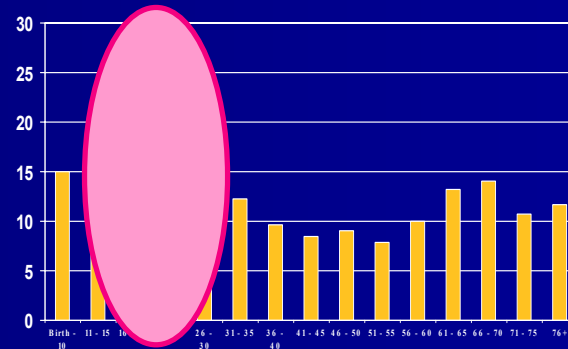
Age

*Cubie J Med Virol 1998; Schiffman and Krüger Kjaer, JNCI 2003;
Rintala MAM, CID 2005; Smith E, STD 2004, Int J Ob Gyn 2004;
Bandyopadhyay S As Pac J Ca Res 2003; Stone 2005, Dunne 2005*

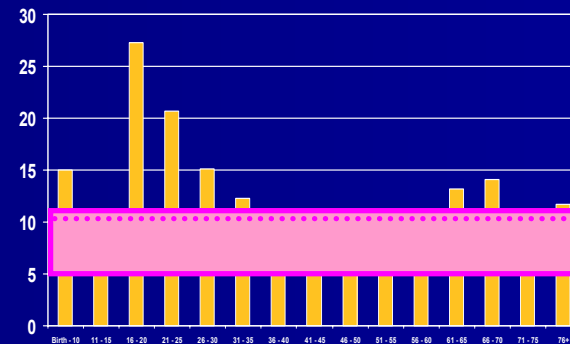
Clifford GM CEPB 2003

Perspective

“HPV is the most common sexually transmitted infection.”



“There is an underlying 5-10% population prevalence of HR HPV detected in the anogenital areas of all females from birth to death, with two punctuating peaks at puberty and menopause....”



“The peak increase of HPV prevalence at puberty is thought to be caused by the efficient transmission of HPV from genital skin to skin contact and normal adolescent sexual exploratory development at a time of high hormonal influence.”

“The peak at menopause is less well studied, but also presumed to be due to hormonal influence combined with past or new sexual exposures.”

Partner Concordance

- Expected HPV type concordance is high in a couple with ongoing sexual relations where the woman has a CIN 1 lesion
- Data show less than 20% concordance of HPV types between partners
 - Often with the male partner negative
 - Mother:child type concordance higher than partner concordance

Discussion Points for Parents

**“prior to sexual debut” or
“before the onset of sexual
activity”**

might be replaced with

“at puberty”

3 Key Educational Points

- HPV is a skin to skin infection
 - Infects multiple epithelial organs in males and females
 - Invades basal epithelium and becomes:
 - Residential
 - Episomal – disrupts normal physiologic functioning all sites
 - Integrated – causes cancer on some epithelial organs
- HPV replaces normal tissue and function
 - Physiological replacement with non-functioning HPV infected tissue
 - Larynx
 - Esophagus
- HPV is the only cause of cervical cancer
 - Most often occurs with genital to genital skin contact
 - A cause of all other anogenital cancers

Choose your perspective

- Doctor/adolescent patient
 - Obligation to discuss sexuality
- Doctor/guardian
 - Obligation to discuss prevention
- Doctor/media
 - Obligation to be balanced